

STAAR English II Test Design

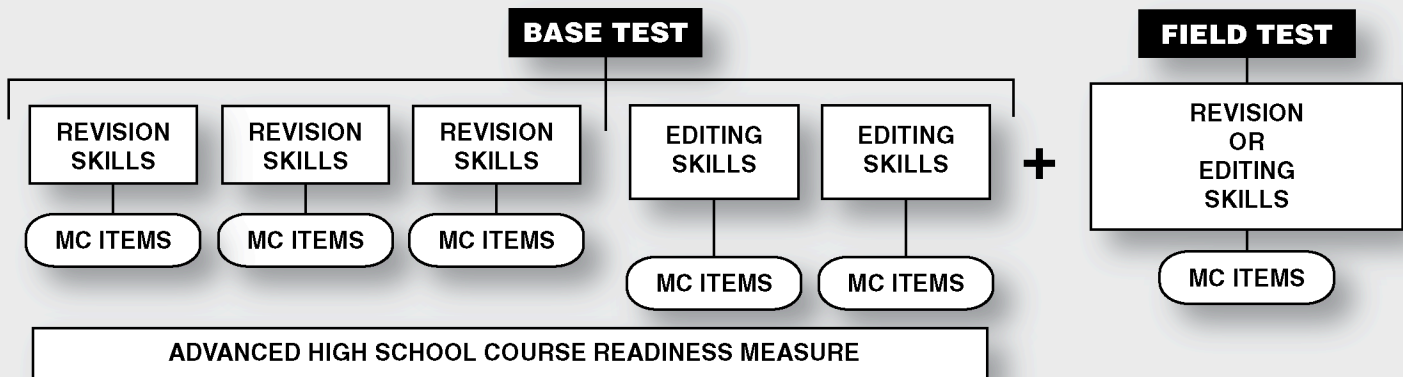


DAY 1 - WRITING

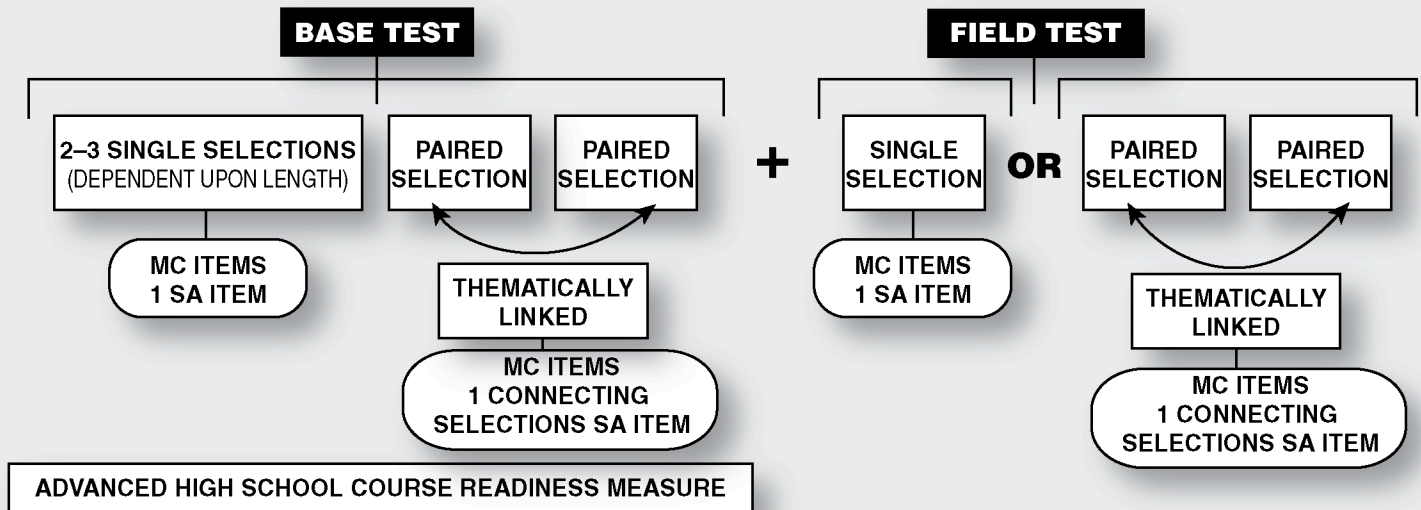
COMPOSITION



MULTIPLE CHOICE



DAY 2 - READING



GENRES ASSESSED:

- | | |
|-----------------------------|-----------------------------|
| LITERARY | INFORMATIONAL |
| • FICTION | • EXPOSITORY |
| • LITERARY NONFICTION | • PERSUASIVE |
| • POETRY | • PROCEDURAL (EMBEDDED) |
| • DRAMA | • MEDIA LITERACY (EMBEDDED) |
| • MEDIA LITERACY (EMBEDDED) | |

TOTAL READING LOAD:

- | | |
|--|-------------------------------|
| BASE TEST | MAXIMUM – APPROX. 3,300 WORDS |
| FIELD TEST | MAXIMUM – APPROX. 1,200 WORDS |
| (LENGTH OF SELECTIONS MAY VARY;
READING LOAD IS CONSTANT) | |